

The ^{SA}_{WG} Sketchbook

President's Message

Seems like it's Harvest Moon time in the Desert....with Hope for each of you to feel the Abundant Creativity inside of you...feasting on the Art you have done this past Season, and hungry to experience what's to come.

Wasn't that a great Sept. Meeting? The workshops are filling up...The Painting Trip to Texas Canyon sounds invigorating AND peaceful....the Western Fed Show is causing lots of creative juices to flow...a very fun and educational evening.

Our October meeting, promises to be just as enjoyable. Shedding all the responsibilities she has taken on to keep her beloved SAWG going strong, Deanna Thibault gets to "just be herself" as she takes us on a journey through her Art, sharing what has made her a Nationally acclaimed Artist.

Inside...

President's Message	1
2003-2004 Board Members ...	2
Membership	3
SAWG Balance Sheet	3
Upcoming Events... ..	3
Artist Opportunities	4
SAWG News and Events	4
Learning Opportunities	6
Members in the News	7
Life Drawing	7
Paint-Out	7

Watch our "Artist Opportunities" page for special all member show possibilities with 1.Lart Puor Art Gallery..2.our Show of Local Washes..3.our show Honoring Mt. Lemmon..4.a show of our Spiritual Art in Dec...and more.

Just a reminder {no fear..just facts!} when SAWG considers a new building with expensive rent... we will be contacting other Art Organizations/Teachers who are also looking for a space to partner with thus sharing the cost. Thank you for all your feedback! We are doing this for the good of the whole and want to hear from you and we will put it to a members vote. We are working on grants. Please give the Grants Committee or Susan Mulholland any leads you find on a wonderful place for SAWG...with Gallery, Meeting and Workshop space.

Artist's are sensitive, you know, so let's use that and create Art!

Thanks, again, for being You... Amazing Southern Arizona Watercolor Guild Artists.

Risa Waldt

Fun Table

Just inside the door 6:30-7:30 SOME SORTA HAPPENING EACH MONTH AT OUR MEETINGS

Each month we will offer you a table to show off new supplies, discounted supplies, new catalogs etc. In September we featured AMERICAN FRAMES and gave away there new catalog. They support our SCHOLARSHIP FUND ALL YEAR LONG they give us 5% of your orders. Also in September they furnished us with two prizes -16x20 frames, plex and mats. THANKS TO THOSE WHO BOUGHT TICKETS TO TRY TO WIN, that \$\$ went into the Scholarship fund.

In October we will feature SARNOFF ARTIST SUPPLIES. Henry and Fred will be there to give you some really good deals and they will donate a percentage back to our WESTERN FED FUND. So you will want to bring your check book. Come see what they bring. We will also still do our raffle, this month the \$\$ will go to Western Fed Fund.

Each month we will bring you something different - and this will raise \$\$ for different things our guild needs. If YOU WOULD LIKE TO HELP AT THE FUN TABLE LET THE FUND RAISING COMMITTEE KNOW.

NEW!!

The Sketchbook is now available in a pdf format on the website!

www.watercolor-sawg.org



2003-2004 Board Members

Officers:

President: Risa Waldt risawaldt@yahoo.com ... 825-9601
Vice President: Brenda Olafson-Hinchman 887-7695
Secretary: Still Needed!!
Treasurer: Kathy Gear ... kgear@email.arizona.edu . 299-2514

Committee Chairpersons:

Correspondence Secretary:

Paula Sherick-Jimenez 572-6621

Historian:

Louise Wyant louise@wyant.com 749-4019

Hospitality:

Carol Duggan 887-4201

Membership/Nominating:

Julia Graf jbggraf@worldnet.att.net 318-0989

Paint-Ins/Outs and Life Drawing:

Blue Butler RAWHIDE350@aol.com 529-3658

Tony Peralta tony162@aol.com 886-0074

Past President and Business/Community Liaison:

Susan Mulholland.. smulholland@Opus1.com 906-6531

Property:

Delbert Sutton delsutton@webtv.net 325-1863

Frank Maloney frankswc@artistnetwork.com .. 733-0642

Tony Peralta tony162nd@aol.com 886-0074

Sketchbook:

Carole Andreen-Harris...carole@lcharris.com 327-9003

Scholarship: Still Needed!!

Western Fed Rep:

Deanna Thibault ... thibault4art@earthlink.com ... 907-6108

Workshops:

Linda Swartz bikesue_99@yahoo.com 743-3320

Mary Lou Rankin ... mlrankin@mindspring.com 399-2258

Lavoris Runyon Lprunyon@aol.com 393-7094

Retreats:

Martha Pancratz ...pankrat@comcast.net 797-1961

Annual Show:

Donna Kohlhoff kohl@theriver.com 299-5028

Desert Museum:

Louise Wyant louise@wyant.com 749-4019

Gretchen Huff huffstuffaz@aol.com 299-9302

Signature Show:

Stephanie Carlton 886-0149

Julia Marshall/Gerry Peirce Curator:

Alice Dance adance@gbronline.com 388-9911

Publicity:

Ruth Canada MsRuthCan@aol.com 577-0664

Grants and Fund-raising:

Deanna Thibault ... thibault4art@earthlink.com ... 907-6108

Judith Beck judithbeck@aol.com 529-3845

The SAWG Website

is www.watercolor-sawg.org and is maintained by Ellen Fountain. She can be reached at 743-7841 or elf@fountainstudio.com. The site is updated regularly as needed.

The SAWG Sketchbook

is published monthly September-May. For digital contributions send text either in the e-mail message or in a Microsoft Word file. Send contributions to;

Carole Andreen-Harris

carole@lcharris.com

327-9003

1922 N. Nancy Rose Blvd.

Tucson, AZ 85712

NOTE: The Sketchbook is mailed using a non-profit bulk mail discount. Therefore, it is NOT forwardable.

October General Membership Meeting

Tuesday, October 14th at the Unitarian Universalist Church, Goddard Hall 4831 E. 22nd Street, Tucson. Social hour starts at 6:30, and the business meeting will begin at 7:30 p.m.

Coming up...

November General Membership Meeting
Tuesday, November 11th.

October Board Meeting

Tuesday, October 7th at Vice President's Brenda Olafson-Hinchman's house - 417 East Lawton St. 887-7695 at 6:00.

Coming up...

November Board Meeting
Tuesday, November 4th.

Advertising

Advertising is available on a first-come/first-serve basis, as space is available. No charge for member advertising. For non-members, it's \$25 for business card size or \$50 for a quarter page.

Membership

Look in this space in every Sketchbook issue for changes to contact information in the membership directory, new members, and other membership information.

Moving? Changed your email? Please send changes to your address, phone, or email to me, Julia Graf. If you will be away from home for a month or more and want to receive your SAWG mailings, please give me your temporary address. Bulk mail is never forwarded, and we need your current mailing address to ensure our mailings reach you. Typically, changes received by the 18th of the month will be included in the mailing list and appear in the Sketchbook issue for the following month.

Changes to the Membership Directory

New Temporary Member:

Rita E. Eckert
10594 East Ravenswood Street
Tucson AZ 85747
520-663-5331
ritaellen@cox.net

Denneen Peterson
HC 70 Box 3166
Sahuarita AZ 85629
520-648-3984
dpete2@juno.com

Address Changes:

Carolyn Dubuque
7030 North bobcat Ridge Trail
Tucson AZ 85743
cdubuque@mail.ucsd.edu

Sarafina Luz
4149 North Ocotillo Canyon Drive
Tucson AZ 85750
(no change to phone and email)

Annette Olson
1029 Latigo Lane
Dewey AZ 86327
928-759-2251

Email/Phone changes and corrections:

Eva Arenas 520-378-0917
Helen Fallon hfallon@worlnet.att.net
Mollie Moody mollmood@msn.com
Linda Phillips kdoyle11@msn.com
Yoshi Rosenberg..... oykoto@comcast.net

Membership Chair:

Julia Graf
1130 N. Norton Ave.
Tucson, AZ 85719
520-318-0989
jbgraf@worldnet.att.net

SAWG Balance Sheet

Checking and Savings Accounts

General Fund Checking Account 18,210.20
Scholarship Account 8,733.01
Western Federation Account 4,348.29
Money Market Account 16,456.57

Total Checking and Savings Accounts 47,748.07

Fiscal Year-to-Date Net Income 10,329.44

Upcoming Events...

Date	Event	Time	Information
Oct. 4	Life Drawing - Nude	9:00 AM - 12:00 PM	See page 7
Oct. 7	October Board Meeting	6:00 PM	See page 2
Oct. 13	Payment Deadline - Workshop: Diane Maxey		See page 6
Oct. 14	Payment Deadline - Triangle T Weekend Painting Trip		See page 6
Oct. 14	October General Membership Meeting	6:30 PM	See page 2
Oct. 15-17	Workshop: "Color, Shapes And A Little Whimsy"		See page 6
Oct. 18	Life Drawing - Costume	9:00 AM - 12:00 PM	See page 7
Oct. 18	Paint Out - Tanque Verde Guest Ranch	9:00 AM	See page 7
Oct. 24-26	Triangle T Weekend Painting Trip		See page 6
Nov. 1	Workshop: Making Cards from your Artwork	8:00 AM - 12:00 PM	See page 6
Nov. 4	November Board Meeting	6:00 PM	See page 2
Nov. 11	November General Membership Meeting	6:30 PM	See page 2
Nov. 12-15	Workshop: Diane Maxey		See page 6
Jan. 24	Workshop: Making and Evaluating a Show-Entry Piece	8:00 AM - 12:00 PM	See page 6
Mar. 12-28	Desert Museum Show		See page 5



The Gallery Search Continues...

As you all know, we closed our gallery on 6th street for a number of reasons, but mostly because of its location and its size. Our current goal is to find a space that can accommodate our meetings, workshops as well as a gallery. With that in mind, the estimated amount of space needed for those activities is around 2000-3500 square feet. Currently, we are looking at a few locations around the Tucson midtown area that would fit that size requirement. The issue is the cost. Most retail centers in mid-town north of Speedway are asking for (depending on the type of property) anywhere from \$17-25 a square foot. If it is a shopping center, then there is usually an extra fee

associated with the rent to cover the maintenance of the common areas such as the parking lot, landscaping and security. These locations offer good night lighting, ample parking, handicapped accessible ramps and entries, back doors/delivery areas and usually other close tenants. Not all these tenants would provide art enthusiastic customers, which would not increase the amount of walk-in traffic; which is something that was mentioned by the majority of the membership as a requirement for the new location.

One space that is being considered is located on the north side of Broadway Blvd, just west of Country Club. If you are familiar with this part of town, it is diagonally across the street from Elle Restaurant and Table Talk. It is where the old Sherwin Williams paint store used to be. It is next to Haiti Arts Galleria La Sirena and Sonoran Designs (a metal framed furniture store) the location is central, but close to downtown. It is 8000 Sq Ft; 4000 square feet of which is in a basement. It is not a typical shopping center because there is a limited amount of parking, but parking on the nearby side streets is not a problem. The owner of Galleria La Sirena has had her space there for 3 years and is very happy with the location; she also would love to have us as neighbors. The price for leasing this space is \$4000.00 a month. A price that some board members feel is high, but considering what type of space it is (with a basement) and the location, I do think that it is reasonable.

The only place where rents are lower is downtown or on 4th ave. Since the majority of the members have expressed that they prefer not to be there, it has not been considered. Other locations such as Plaza Palomino and the shopping center at Prince and Campbell have also been considered. There is also the shopping center at the southwest corner of Fort Lowell and Campbell that has just had a Checker Auto store leave as well as another vacancy from a Sherwin Williams paint store. The rent at this center is approximately \$21.00 a square foot including the maintenance fee of \$5.20 which is higher than the other shopping centers considered.

Tucson has plenty of vacant retail and commercial space available. There is no problem locating available space, the challenge will be to find the right space for our guild to thrive in. We need to consider not only the initial cost, but what we will do insure that we can maintain the new facility and what money making activities we can do to ensure that we can meet our monthly expenses. For example: having on going classes or workshops, renting space to guild and non-guild members for open studios, etcetera.

If anyone is interested in joining the gallery search committee please feel free to contact Susan Mulholland at either 906-6531 or 327-2437 for more information. I can also be reached by email at smulholland@opus1.com

SAWG News and Events

In Sympathy

Former SAWG member **Ann McAnally** died September 5th after a long illness.

Born and brought up in Iowa, she then became a world-traveler when she married an Air Force officer. After retiring to Tucson she became involved with art groups, MENSA, and was listed in Who's Who of America.

She was an expert creator of acrostic puzzles which were published in a book. Her interests and volunteer work are too numerous to mention. Our thoughts are with the family of this multi-talented lady.



Artist Opportunities

Global Art Exchange

SAWG will be participating in the Global Art Exchange. Look for more information at the October general meeting.

SAWG News and Events

Desert Museum Show Update

Especially for new members:

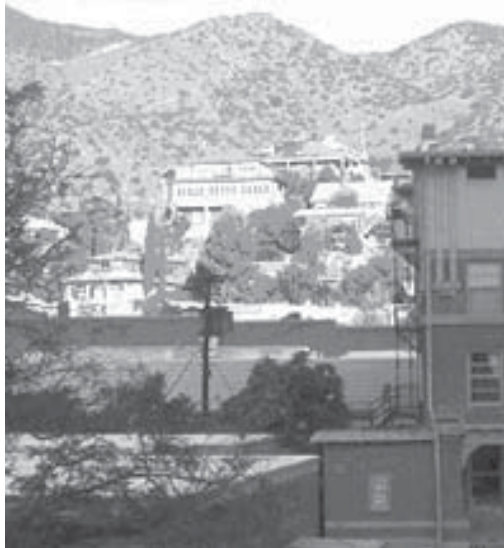
For the past 7 years SAWG has mounted a watercolor show at the Arizona-Sonora Desert Museum's Ironwood Gallery. This year's show will be from March 12-28, 2004.

Paintings should be more than 50% watermedia on paper (Yupo accepted). Minor additions might be pencil, ink, collage, pastel, etc. In keeping with all exhibitions at the Museum, the show's theme is the Sonoran Desert in all its aspects: land, towns, plants, animals, weather, people, structures, crafts, etc. As well as showcasing watercolor this exhibition helps to educate the public as to what the Sonoran Desert encompasses. Geographically it extends from most of Baja, to El Centro, Needles, north of Phoenix, base of White Mts., just east of Tucson, Green Valley and the coast of the State of Sonora. It does not include Tubac, Patagonia, Sonoita, Sierra Vista and points east.

We hope this will give you painting ideas that are new and innovative.

This is an enjoyable show to work on and we welcome new members to join the fun on receiving/jurying day, hanging, reception and final pickup. Please contact Louise Wyant or Gretchen Huff.

Happy painting!



Bisbee Weekend

Twenty artists gathered at the Copper Queen Hotel in Bisbee on July 25th this summer. Several went out before dinner looking for places to paint the next day. We met at six in the upstairs lobby to meet each other and discuss plans. Many of us went next door to have dinner together at the Harlequin Restaurant. It was a delicious and fun dinner. Several participants were up at six the next morning scouting out places. After breakfast many were ready for a long day of painting. Some painted in one location, some painted in several locations, and even one decided to use the time to catch up on painting projects in the meeting room we had

rented for the day. Lunch was on your own depending on your painting needs. In the afternoon about seven painted "Michael" a local character dressed in an old fashion costume in the meeting room. At that time, it also decided to rain. At 6:00 we gathered in the meeting room with our paintings and snacks, many provided by Ruth Canada. It was really wonderful to see what everyone had been working on. We spread out after that to have dinner in a variety of different restaurants. Again the next morning several got up very early for walks, many had breakfast around 8:00 on the Copper Queen Patio. Some stayed for more painting, some hiked up to a little shrine, and the artists left at a variety of times. Every seemed to have a great time.

Exhibition of Betty Amerson's Paintings

Betty Amerson Whitcomb was a member of the National League of American Pen Woman for many years until her death last year. During her years she created many oil paintings in various styles and themes, as well as some watercolors and charcoal drawings. She worked from the '50's to the '90's Betty also owned two galleries in Tucson and was a featured artist in American Artist Magazine in the '70's Betty was an excellent artist and her paintings are wonderful to see to track her artistic development.

Betty's daughter, Kristi, is now sorting through her mother's things and taking stock of the paintings. She is planning a large exhibition/party/sale at Betty's home. The show will be a retrospective. Kristi has invited SAWG to view the works at our own gathering beforehand. Refreshments will be served.

You are welcome to bring along as many friends as you would like. Please show your support for Betty and for the Tucson art community by attending this event. The Show/Reception/Sale takes place 2:00 -7:00 pm on Saturday, Oct. 18 at 4501 N. Avenida de Paz, Tucson (from River and Swan go north on Swan to Paseo del Bac, turn right - east. Take first left - north - onto Avenida de Paz, go 1/2 block and 4501 is on the left).

See you there!

Learning Opportunities

Workshop Artist Of The Month - Deanna Thibault

"Color, Shapes, and a Little Whimsy"



"The Turquoise Vase"



"The Turquoise Vase"

Her art is unique - don't we all wish that could be said about ours - but that's not all. Deanna Thibault has the unique ability to bring out the artist in all of us. Deanna's business card and website (thibault4art.com) says it al; "Artist/Teacher". If you are or have been one of her students, you know that each lesson with Deanna gives you new knowledge and experiences to help evolve your personal style. This three-day workshop will do the same for those fortunate to participate.

Deanna's workshop materials list, mailed to all who register, recommends bringing 3-4 full sheets and 4 half sheet of (used) paper covered with white gesso which indicates we'll be very productive! It also says, "Come as if you are YOUNG AT ART AGAIN free to experiment and have FUN", so this workshop is for all levels - beginners, intermediate and advanced painters. As for the FUN part, that's where the WHIMSY comes in! Deanna will demonstrate ways for you to add the unexpected, something out of the ordinary, fanciful humor when desired, and the unpredictable to catch the viewer's eye and convey the feelings intended in your work.

If you have not yet registered for this October 15-17 SAWG workshop, call Linda Swartz (730-5756) to see if space is available and make arrangements to attend.



"The Turquoise Vase"

Triangle T Weekend Painting Trip

The September Meeting is the time to sign up for the Triangle T Weekend Painting Trip For October 24-October 26 2003.

SAWG is planning a weekend for painting in Texas Canyon at a guest ranch <http://www.triangletgustranch.com/>. We will be sharing cabins and meals together. Other activities will be planned by those interested in going and serving on the planning committee. The approximate cost will be \$150 which includes two nights and meals. The exact cost will be set by the committee and those who have signed up will need to pay by October 14th. That is the night of the October guild meeting. The facilities are more rustic than the Copper Queen, but I have heard that the food is good. Elevation is 4500 feet and it is 60 miles east of Tucson.

Painting together and taking a weekend for painting and painting friends is wonderful, come join us. There will be forms for you to fill out at the September meeting. If you are not able to make the September meeting please email me and I will ask for needed information. At this time I am looking for volunteers to help plan.

Martha Pankratz

797-1961 (evening) or pankratz@comcast.net

Workshop Reminder

Our November artist is Diane Maxey. She is well known and very popular with SAWG artists, as demonstrated by 4 registrations made within minutes of releasing the 2003-2004 SAWG Workshop brochure at the September 9 General Meeting.

Diane paints what she loves - especially her gardens and her favorite locations in Arizona and around the world. If you are taking this workshop, plan to bring your photos, notes, and sketches of things and places that inspire you. To learn more about Diane's work, see the cover and article, "The Language of Flowers", in the Spring 2000 issue of Watercolor Magic, and watch for details on her SAWG November 12-15 workshop in next month's Sketchbook.

If you have already reserved a space in Diane Maxey's SAWG workshop, please send the tuition balance due to Linda Swartz, 5511 N. Blue Bonnet Rd, Tucson, AZ 85745 by October 13 or your space will be given away and your deposit forfeited.

If you want to take this workshop, mail your registration form and full payment to Linda ASAP, as space is limited to 20.

Learning Opportunities

Mexico Workshops

Barry Sapp will again be teaching two week watercolor workshops in Mexico. This coming years schedule is as follows:

"Art, History and Culture in Mazatlan"
January 30 - February 12

"Art and Archeology in Puebla and Oaxaca"
March 1 - March 14

For more information, call Barry at 748-7440 or Geronimo Educational Travel at 1-888-472-6643.

Watercolor Classes.

Barry Sapp, Past President of SAWG, invites you to improve your watercolor skills with Open classes, all levels, Saturdays, 9:00 a.m. to 1:00 p.m., at the Eastside Sunshine Senior Center, 7901 E. Scarlett (1 block south of Broadway, NE corner of Pantano & Scarlett). Critique, lesson & handout, demo. - \$10.00. For more information call Barry at 748-7440 or email at ruinscapes@juno.com.

Life Drawing

The October Life Drawing sessions will be held at Dianna Thibault's studio at 267 S. Stone, Labor Temple Building, Studio "E" on the 4th (Nude) and the 18th (Costume) from 9:00 a.m. to 12:00 pm.

Paint-Out

Now that it has finally cooled off the paint out will be at the beautiful and historical Tanque Verde Guest Ranch. Snuggled into the foothills of the Rincon mountains, this was a working Cattle Ranch some fifty years ago.

The area provides a variety of subject matter; the hacienda, horses, corrals, barns, a lake, giant cottonwoods... endless inspiration.

It is at the "dead end" of Speedway, as far as you can go east. We will meet around 9:00 a.m., on Tuesday, October 21st. Bring a lunch and enjoy the place and painting comrades.

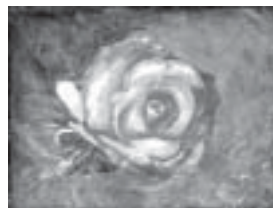
Members in the News

Have some great news? Send your news to Carole Harris at carole@lcharris.com (put Member News in the subject line) or 1922 N. Nancy Rose Blvd. Tucson 85712. Please make sure to include a photo of your work (mailed photos will be returned).



"Just One Kiss"

Ruth Canada's mixed media entry has been accepted in the NAPA USA International Exhibition (National Acrylic Painters Association). Her painting "Just One Kiss" will be on exhibit September 18 - November 9 at the Cornell Museum in Delray Beach, FL. The gala opening reception is on Sept. 25th. She also has 3 paintings, Monsoon Madness, My Mom & Sparkling Rose, accepted for the show in the Gallery Shop's "New Members Only Exhibit" at the Tubac Center of the Arts. The exhibit runs September 9 - October 6, 2003.



"Sparkling Rose"



"My Mom"

Stephanie Carleton had a piece accepted into this year's Watercolor West XXXV Annual Exhibition, running September 6th through October 25th. The piece also won a Juror's Award, and Stephanie has become a signature member of Watercolor West.

Susan Matte-Farina has some of her paintings on display at the Tucson Arts District Partnership's Phantom Gallery, at 10 E. Congress. The show runs through October 10th. You can also see some of Susan's dynamic pieces at www.matteimpressions.com.

Tom Gress was selected as the featured artist at the "Rally in the Rockies" event in Durango, Colorado taking place on August 27-30. Mr. Gress designed the show poster and limited edition print. The original painting by Tom, titled "Live to Ride with American Pride" was auctioned for charity. The show drew 20,000 people from all parts of the country.

Those who have been Guild members for a few years will remember former member **Alix Thayer** who won an Award of Excellence in our '99 Annual Show. Alix now lives in California and is a featured artist in a wonderful article (Color, Texture, Shape and Line: Creating Mixed-Media Abstractions) in the Fall 2003 issue of Watercolor magazine. Many of her multi-media abstract paintings are featured and her working methods are described. Congratulations, Alix!



Southern Arizona
Watercolor Guild
PO Box 145
Tucson, AZ 85702-0145

Non-Profit Org.
U.S. Postage
PAID
Permit #1713
Tucson, Arizona

The ^{SA}WG Sketchbook

Members in the News

Judy Nakari received the Friends of Watercolor Award at the Taos International Honors Show, at the Martinez Hacienda Museum in Taos NM, July - September. She had two paintings accepted (from 843 submissions, 96 were selected) into the Rocky Mountain National show at Foothills Art Center in Golden, CO August 30 - October 26. She also led a fun and successful painting workshop in Tuscany, Italy in August, and plans to do it again next June. Judy and her husband Ken have been part-time Tucsonan's since 2000, and will become full-time residents in December.



Cynthia Rose will have six paintings in the "Gallery" at the angel exhibition at the Tucson International Airport, which runs from September 26th to December 1st, located between Delta Airlines and Southwest Airlines Ticketing areas.. The reception

8 for the show will be October 31st from 10 a.m. - 2 p.m. All are invited to the event!

Louise Wyant had one of her watercolor paintings accepted into the 2003 Rocky Mountain National Watermedia Exhibition, Foothills Art Center, Golden CO. The show runs until October 26. Juror was Harold Gregor.

Penny Duncklee and her husband, John, were happy to learn that we have been chosen by The Friends of Thomas Branigan Memorial Library in Las Cruces, NM, for the Author of the Year Award for their bi-lingual children's book, *Manchado and His Friends/Manchado y Sus Amigos*. John wrote it and Penny illustrated it with 14 watercolors. The book should be available in all the local bookstores. On an additional note; last May Penny was elected President of the Southern Chapter of the New Mexico Watercolor Society.

